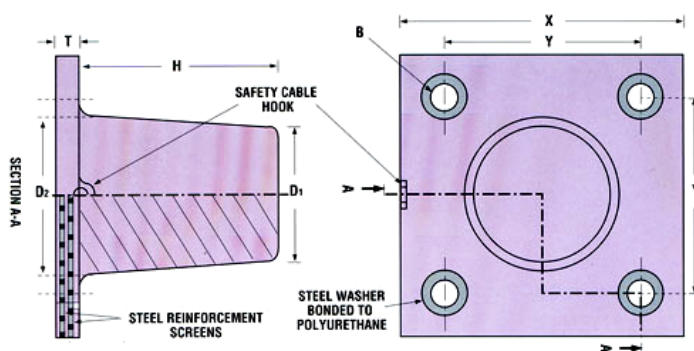




Poly-Pro "P" series Crane bumpers are made of single piece molded Polyurethane bumper body with integrally molded base, with reinforcing expanded metal screen(s) molded inside the base. The 4 molded mounting bolt holes in the base has bonded steel washers. This design eliminates the possibility of the bumper portion separating from the mounting base plate, such as in steel base plate designs. This design bumper is much lighter than the steel base plate design, of a similar size.



## "P-Series" Crane Bumpers

P.P.C Part Number	BUMPER			MOUNTING BASE					BUMPER Volume Cu. In.	BUMPER CAPACITY Kinetic Energy during impact Ft-lb./In.	Weight of Bumper, Pounds
	Top Dia. D1	Base Dia. D2	Height H	Outside Size (sq.) X	Bolt Centers Y	Bolt Size B	Thick ness T	No. of Reinforcing Screens			
CB-P2	2"	2 1/4"	3"	5"	3"	1/2"	3/8"	1	11	310	1
CB-P3	3"	3 3/8"	4 1/2"	6 1/2"	4 1/2"	1/2"	1/2"	2	36	1000	3
CB-P4	4"	4 3/8"	6"	8"	6"	1/2"	1/2"	2	83	2300	6
CB-P5	5"	5 1/2"	7 1/2"	10"	7 1/2"	1/2"	1/2"	2	163	4550	11
CB-P6	6"	6 1/2"	9"	12"	9"	3/4"	3/4"	3	276	7700	18
CB-P7	7"	7 5/8"	10 1/2"	13 1/2"	10 1/2"	3/4"	3/4"	3	441	12300	27
CB-P8	8"	8 3/4"	12"	15"	12"	7/8"	7/8"	3	661	18500	40
CB-P9	9"	9 7/8"	13 1/2"	16"	13"	7/8"	7/8"	3	945	26500	52
CB-P10	10"	11"	15"	19"	15"	7/8"	1"	4	1300	36400	72
CB-P11	11"	12 1/8"	16 1/2"	20"	16"	1"	1"	4	1735	48500	95
CB-P12	12"	13 1/4"	18"	22"	18"	1"	1 1/8"	4	2255	63100	125